



## CHECKPOINTS (CPS)

All teams must register at a CP at or before its closing time in order to be allowed to proceed. Kindly refrain from loitering near CPS' closing times. Water and basic first aid will be provided at the Start Point, the Finish Point and all CPS. Bread and hot drinks (instant soup, tea, and coffee) are available at some CPS. **Disposable cups and bottles will not be provided.**

Oxfam Trailwalker souvenirs will be sold at the Start and Finish Points while stocks last!

### LOCATIONS AND CLOSING TIMES OF THE CPS ARE AS FOLLOWS:



Accessible by Public Transport



Bread & Hot Drinks



Toilet



First Aid

#### START: PAK TAM CHUNG



Please use public transport to access Pak Tam Chung so as to reduce traffic congestion. Oxfam will have shuttle buses that will bring passengers to the Start Point, further details will be announced on the event website.

At the Start Point, drinking water will be available from water dispensers. Please bring your own bottle / container.

#### CP1: SAI WAN (CLOSES AT 21:00, FRIDAY)



The CP is located in Sai Wan Village. Food, drinks, and telephones are available at shops in the village. The Organiser will provide bottled water for participants at this CP.

#### CP2: PAK TAM AU (CLOSES AT MIDNIGHT, SATURDAY)



The CP is in the Country Park area. Private vehicles without a valid permit will be prohibited.

Private vehicles are not permitted in this area by the Country Park Authority. Please access this CP (near Pak Tam Road) by KMB bus No. 94, mini bus No.7, or taxi from Sai Kung. Support teams should leave their vehicles at Pak Tam Chung.

From noon to 22:00 on Friday, a free shuttle service will be provided by the Organiser which will run between the barrier at Pak Tam Chung and CP2.



# CHECKPOINTS (CPS)



Accessible by Public Transport



Bread & Hot Drinks



Toilet



First Aid

## CP3: KEI LING HA

(CLOSES AT 07:00, SATURDAY)



Descend from Kai Kung Shan to Sai Sha Road, then cross the main road and go up the staircase to the CP at the barbeque site. Support teams can wait for their walkers in the open area near the public toilet opposite the CP or at the Shui Long Wo Campsite.

**Support Teams are strongly advised to take public transport to CP3 instead of driving.**

Notes:

- Only walkers are allowed in the CP area.
- **Loading, unloading, or parking is not allowed around the entrance (within 150 m) of the CP.**
- **The car park near Shui Long Wo (next to CP3) will be closed and temporarily be transformed into a drop off area for passengers and goods.**
- The police will enforce traffic control along Chuk Yeung Road where support team vehicles will not be allowed to park.

## CP4: GILWELL CAMPSITE

(CLOSES AT 15:00, SATURDAY)



To avoid obstructing emergency vehicles or the trail and areas around it, support team members are encouraged to take a taxi to the pavilion on Jat's Incline or The Lion Pavilion on Shatin Pass Road.

**Traffic control will begin at Lion Pavilion (near MacLehose Trail Distance Post M101) and extend to the intersection of Jat's Incline and Fei Ngo Shan Road, including the intersection of Kwun Ping Road and Shatin Pass Road (entrance of Kwun Yam Garden and Kwun Yam Shan Village) from Friday to Saturday. Parking is strictly forbidden. Only loading / unloading will be allowed within the designated zone.**



## CHECKPOINTS (CPS)



Accessible by Public Transport



Bread & Hot Drinks



Toilet



First Aid

### CP5: BEACON HILL

(CLOSES AT 17:00, SATURDAY)



The CP is next to the tower at the top of Beacon Hill, which is a restricted area. Private cars without a valid permit will be prohibited.

### CP6: SMUGGLERS RIDGE RIFLE RANGE

(CLOSES AT 21:00, SATURDAY)



After crossing Tai Po Road, the trail follows Golden Hill Road past Kowloon Reservoir and goes uphill for the next two kilometers. The CP is just past the brow of the hill on the right.

Please note that Golden Hill Road will be temporarily closed during the event. Unauthorised vehicles will not be allowed to enter. Support Teams are strongly advised to take public transport to CP6 instead of driving. If you must drive, **please park at the public car park on Tai Po Road (Piper's Hill)**, then walk about three kilometers (about an hour) to the CP6 support area.

### CP7: LEAD MINE PASS

(CLOSES AT 01:00, SUNDAY)



After descending Grassy Hill, you will find the CP located near the entrance of Section 8 of the MacLehose Trail. Lead Mine Pass is in the Country Park area. Private vehicles without a valid permit will be prohibited.



## CHECKPOINTS (CPS)



Accessible by Public Transport



Bread & Hot Drinks



Toilet



First Aid

### CP8: TAI MO SHAN (CLOSES AT 07:00, SUNDAY)



The CP is at the Tai Mo Shan Visitor Centre, which is about 500 meters from the junction of Tai Mo Shan Road and Route Twisk. Walkers will arrive at this CP walk about one hour along Tai Mo Shan Road after reaching the summit of Tai Mo Shan.

**Please note that Tai Mo Shan Road will be closed during the event. Please also note that unauthorised vehicles will not be allowed to enter Tai Mo Shan Road.**

From 16:00 on Friday to 23:00 on Saturday, the Organiser will provide a free shuttle service that will run between the Tsuen Wan MTR Station and CP8 support area.

### CP9: TAI LAM CHUNG RESERVOIR (CLOSES AT 10:00, SUNDAY)



The CP is at a picnic site in the Country Park area, just near Kat Hing Bridge. Private cars without valid permit will be prohibited.

**Teams found to have taken shortcuts will be disqualified. Penalty Points will be set up between CPs. Any team having any member of the team found to have passed the Point will have 120 minutes added to the finishing time of the team.**







# CHECKPOINTS (CPS)



Accessible by Public Transport



Bread & Hot Drinks



Toilet



First Aid

## FINISH: CHU HAI COLLEGE OF HIGHER EDUCATION (CLOSES AT 14:00, SUNDAY)



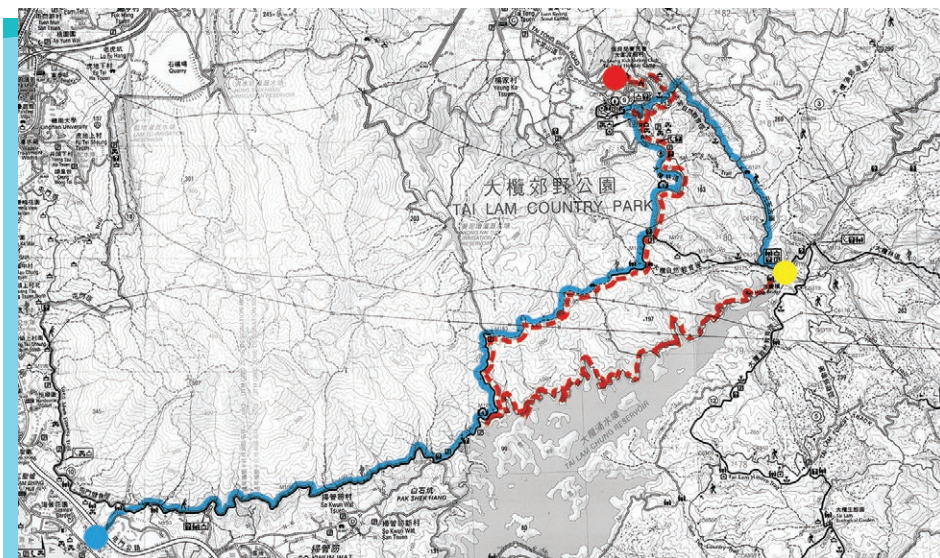
We strongly encourage support teams take public transport to the Finish Point located at 80 Castle Peak road, Castle Peak Bay, Tuen Mun. It is very convenient to reach, and further information may be found on page 38.

No accommodation or shower facilities will be available at the Finish Point. Participants can book Gold Coast Hotel at a discounted price or use the shower facilities at the Cafeteria Old Beach. Arrangement and discount details will be announced later, please check our website.

Please note:

Please keep quiet as the path between Ching Ying Road to the Finish Point is close to residences, as to avoid affecting residents nearby.

## NEW FINISH POINT AND REVISED ROUTE



— NEW ROUTE

● CHECKPOINT 9

● NEW FINISH POINT  
CHU HAI COLLEGE OF  
HIGHER EDUCATION,  
TUEN MUN

● OLD FINISH POINT  
PO LEUNG KUK JOCKEY CLUB  
TAI TONG HOLIDAY CAMP,  
YUEN LONG

- - - OLD ROUTE



## REVISED ROUTE (CP9 TO FP)

1



### After Distance Post M174

Participants follow the MacLehose Trail after checking in at CP9.

2



### Junction between Distance Post C6119 and M175

Turn right at the entrance of Yuen Tsuen Ancient Trail C6119 and head to Tai Tong Barbecue Site.

3



### Move along Yuen Tsuen Ancient Trail (C6119 – C6124)

Follow the directions to Tai Tong Nature Trail at the junction.

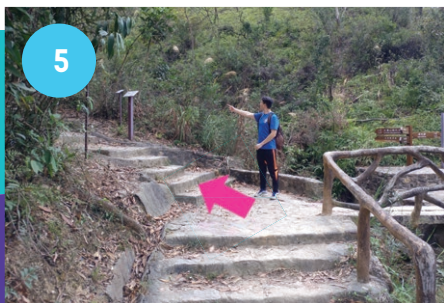
4



### Move along Yuen Tsuen Ancient Trail (C6119 – C6124)

Follow the directions to Tai Tong Nature Trail at the junction.

5



### Move along Yuen Tsuen Ancient Trail (C6119 – C6124)

Follow the directions to Tai Tong Nature Trail at the junction.

6



### Move along Yuen Tsuen Ancient Trail (C6119 – C6124)

Follow the direction heading to Tai Tong Barbecue Site at the junction.





Turn left to Tai Tong Shan Road then go upward to the Tai Lam Forest Track after reaching Tai Tong Barbecue Site.



Follow the Tai Lam Forest Track and turn right at the junction, then follow the MacLehose Trail to M178 and move on to M193.



#### Between Distance Post M193 and M194

Move along Section 10 of the MacLehose Trail, turn left to the gate after about 320m pass Distance Post M193.



Head to Tsing Ying Road by taking the big stairs down. **(The steps here are high, please be careful).**



At the end of the stairs, turn right and walk 600m. The Finish Arch will be found at Chu Hai College of Higher Education.

**Please keep quiet, especially at night and in the early hours of the morning, as the path is close to residences.**



Cross the finish line at Chu Hai College of Higher Education.



## TRANSPORTATION TO THE FINISH POINT

Please note: As there is a lack of public parking and parking facilities at the Finish Point, Chu Hai College, the Organiser strongly encourages everyone to use public transport to travel to the Finish Point to avoid serious traffic congestion. The Organiser hopes to have your cooperation so as to minimise the inconvenience made to the local residences. We appreciate all your support and understanding!

### SHUTTLE BUS

From 07:00 on Saturday, 16 November, to 07:00 on Sunday, 17 November, the Organiser will provide a free shuttle service that will run between the Finish Point and MTR Station. The bus schedule will be displayed at the Finish Point.

### BY PUBLIC TRANSPORT (FOR DETAILS, PLEASE REFER TO SCHEDULES OPERATED BY VARIOUS TRANSPORTATION COMPANIES)



#### ALIGHT AT CAFETERIA BEACH

<b>BUS</b>	From HK Island to Tuen Mun: 962, 962B From Kowloon to Tuen Mun: 52X, 252B, 261B From NT / Lantau to Tuen Mun: 53, 61M, K51, K53, A33
<b>MINI BUS (GREEN)</b>	Ho Pong Street, Tuen Mun < > Cafeteria Beach: 43, 43B, 43S Mini Bus Station at Tsing Yi MTR Station (Maritime Square) < > Cafeteria Beach: 140M
<b>MINI BUS (RED)</b>	Parkes Street in Jordan < > Tuen Mun & Yuen Long
<b>TAXI</b>	Chu Hai College < > Tsuen Wan MTR Station (fee: around \$140) Chu Hai College < > Tsing Yi MTR Station (fee: around \$190) Chu Hai College < > Tuen Mun MTR Station (fee: around \$40)

source: <https://www.chuhai.edu.hk/map-directions>