



TRAILWALKER ROUTE



Route

The 100 km route starts in Pak Tam Chung at Sai Kung, and covers sections 1 to 9 of the MacLehose Trail, which is about 88 km (M001 – M174). After passing distance post M174 and leaving CP9, the route leaves the MacLehose Trail and travels five kilometers along a country trail to the north coast of Tai Lam Chung Reservoir. The trail then turns right along a paved road towards Wong Nai Tun / Tai Tong and heads towards the Finish Point at the Po Leung Kuk Jockey Club Tai Tong Holiday Camp in Yuen Long (OTW175 – OTW198).



Important Note:

The Oxfam Trailwalker trail is not identical to the MacLehose Trail.



MacLehose Trail

Oxfam Trailwalker route

Section 2 M031-M033

From M031 pass through Sai Wan beach to M033

Section 8 M153-M156

From M153 along Tai Mo Shan Road (takes the old MacLehose Trail) to Route Twisk

Section 10 M175-M200

From OTW175 to OTW198 and the countdown signage inside the Finish Point campsite (turn left towards Kat Hing Bridge after registering at CP9, then walk along a country trail next to Tai Lam Chung Reservoir)



Participants should stay on the marked course. Shortcuts are strictly prohibited.

The Organiser will carry out random checks. The Organiser will not record the results and rankings of participants who are found to have taken shortcuts.

TaiKoo Park, TaiKoo Place
Hong Kong, 2013



Modern cities are growing fast. Demand for energy even faster. We see it differently.

Innovative urban development can help safeguard the environment. We were the first developer in Hong Kong to provide free energy audits to office tenants. Recently we launched the 2020 Energy Reduction Pledge with the aim of reducing our annual energy consumption by 64 million kWh, as compared to 2008. These advances highlight our commitment to solutions that ensure our projects are sustainable for the long term. swireproperties.com

ENDURING ORIGINALITY





CHECKPOINT (CP) DISTANCES & ELEVATION

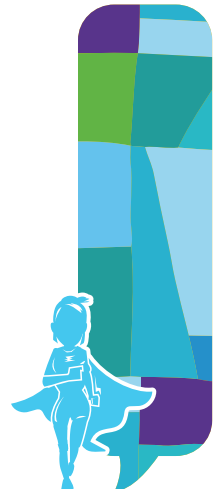
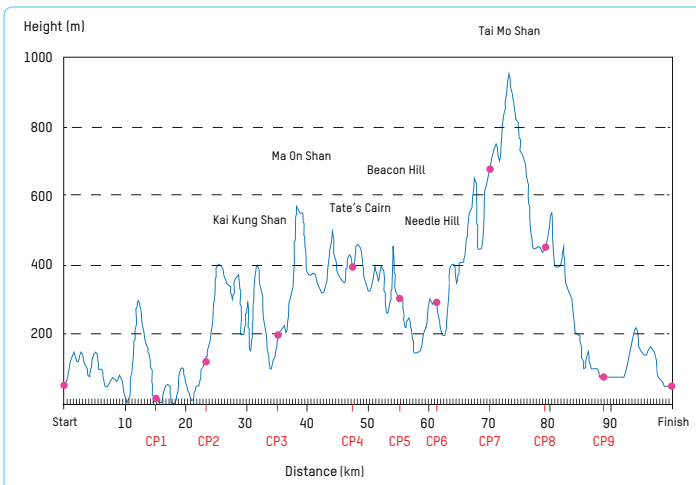


CP Distances

Checkpoint	Distance (km)	Accumulated Distance (km)	Difficulty
Start to CP1	15.9	15.9	★
CP1 to CP2	8.9	24.8	★★
CP2 to CP3	9.9	34.7	★★★
CP3 to CP4	12.7	47.4	★★★★
CP4 to CP5	7.7	55.1	★★
CP5 to CP6	5.9	61.0	★
CP6 to CP7	8.5	69.5	★★
CP7 to CP8	8.9	78.4	★★
CP8 to CP9	9.5	87.9	★
CP9 to Finish	12.1	100	★★



CP Elevation





CHECKPOINTS (CPS)

All teams must register at a CP at or before its closing time in order to be allowed to proceed. Kindly refrain from loitering near CPs' closing times. Water and basic first aid will be provided at the Start Point, the Finish Point and all CPs. Bread and hot drinks (instant soup, tea and coffee) are available at some CPs. **Disposable cups and bottles will not be provided.**

Oxfam Trailwalker merchandises will be sold at the Start and Finish Points while stocks last.

Locations and closing times of the CPs are as follows:



Accessible by Public Transport



Bread & Hot Drinks



Toilet



First Aid Station

Start: Pak Tam Chung



Please use public transport to access Pak Tam Chung so as to reduce traffic congestion. At the Start Point, drinking water will be available from water dispensers. Please bring your own bottle / container.

CP1: Sai Wan (Closes at 21:00, Friday)



The CP is located in Sai Wan Village. Food, drinks and telephones are available at shops in the village. The Organiser will provide bottled water for participants at this CP.

CP2: Pak Tam Au (Closes at midnight, Saturday)



Private vehicles are not permitted in this area by the Country Park Authority. Please access this CP (near Pak Tam Road) by KMB bus No. 94, mini bus No.7 or taxi from Sai Kung. Support teams should leave their vehicles at Pak Tam Chung.

From noon to 22:00 on Friday, a free shuttle service will be provided by the Organiser which will run between the barrier at Pak Tam Chung and CP2.



CHECKPOINTS (CPS)

 Accessible by Public Transport



Bread & Hot Drinks



Toilet



First Aid Station

CP3: Kei Ling Ha (Closes at 07:00, Saturday)



Descend from Kai Kung Shan to Sai Sha Road, then cross the main road and go up the staircase to the CP at the barbecue site.

Support teams can wait for their walkers in the open area near the public toilet opposite the CP or at the Shui Long Wo Campsite.

Notes:

- Only walkers are allowed in the CP area.
- Loading, unloading or parking is not allowed around the entrance (within 150 m) of the CP.
- The car park near Shui Long Wo (next to CP3) will be closed and temporarily be transformed into a drop off area for passengers and goods.
- The police will enforce traffic control along Chuk Yeung Road where support team vehicles will not be allowed to park.

CP4: Gilwell Campsite (Closes at 15:00, Saturday)



To avoid obstructing emergency vehicles or the trail and areas around it, support team members are encouraged to take a taxi to the pavilion on Jat's Incline or The Lion Pavilion on Shatin Pass Road.

Traffic control will begin at Lion Pavilion (near MacLehose Trail Distance Post M101) and extend to the intersection of Jat's Incline and Fei Ngo Shan Road, including the intersection of Kwun Ping Road and Shatin Pass Road (entrance of Kwun Yam Garden and Kwun Yam Shan Village) from Friday to Saturday. Parking is strictly forbidden. Only loading / unloading will be allowed within the designated zone.


CP5: Beacon Hill (Closes at 17:00, Saturday)



The CP is next to the tower at the top of Beacon Hill, which is a restricted area. Private vehicles without a valid permit will be prohibited.

CHECKPOINTS (CPS)

 Accessible by Public Transport

 Bread & Hot Drinks

 Toilet

 First Aid Station

CP6: Smugglers Ridge Rifle Range (Closes at 21:00, Saturday)



After crossing Tai Po Road, the trail follows Golden Hill Road past Kowloon Reservoir and goes uphill for the next two kilometres. The CP is just past the brow of the hill on the right.

Please note that Golden Hill Road will be temporarily closed during the event; unauthorised vehicles, including mountain bikes, will not be allowed to enter. Support teams are strongly advised to take public transport to CP6 instead of driving. If you must drive, please park at the public car park on Tai Po Road (Piper's Hill), then walk about three kilometres (about an hour) to the CP6 support area.

CP7: Lead Mine Pass (Closes at 01:00, Sunday)



After descending Grassy Hill, you will find the CP located near the entrance of Section 8 of the MacLehose Trail. Lead Mine Pass is in the Country Park area. Private vehicles without a valid permit will be prohibited.

CP8: Tai Mo Shan (Closes at 07:00, Sunday)



Note: Although the AFCD has changed part of the route of Section 8 on the MacLehose Trail in October 2009, Oxfam Trailwalker will continue to use the old route.

The CP is at the Tai Mo Shan Visitor Centre, which is about 500 meters from the junction of Tai Mo Shan Road and Route Twisk. Walkers will arrive at this CP about one hour after reaching the summit of Tai Mo Shan.

Please note that Tai Mo Shan Road will be closed during the event. Please also note that unauthorised vehicles, including mountain bikes, will not be allowed to enter Tai Mo Shan Road.

From 16:00 on Friday to 23:00 on Saturday, the Organiser will provide a free shuttle service that will run between the Tsuen Wan MTR Station and CP8 support area.

CHECKPOINTS (CPS)

 Accessible by Public Transport

 Bread & Hot Drinks

 Toilet

 First Aid Station

CP9: Tai Lam Chung Reservoir (Closes at 10:00, Sunday)



The CP is at a picnic site in the country park area, just near Kat Hing Bridge. Private vehicles without a valid permit will be prohibited.

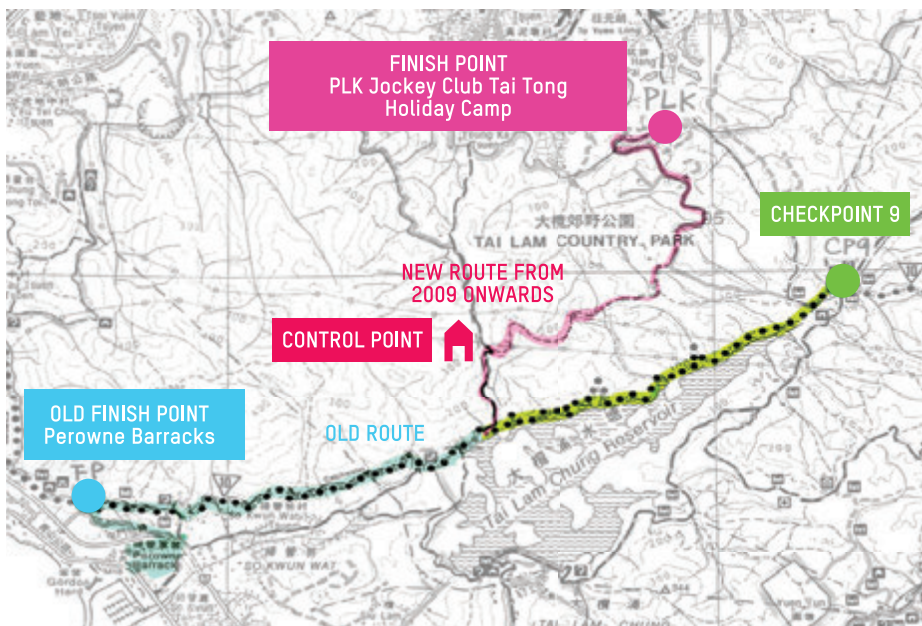
Teams found to have taken shortcuts will be disqualified. All teams must pass through the Control Point after CP9 before proceeding to the Finish Point.

Finish: Po Leung Kuk Jockey Club Tai Tong Holiday Camp, Yuen Long (Closes at 14:00, Sunday)



The route to the Finish Point can be challenging, as parts of it are unpaved, uphill paths. Participants are advised to train adequately before the event.





VAUDE

The Spirit of Mountain Sports



Official Gear 2018

ALL APPAREL

0% PFC

**100% LOVE
OF NATURE**

Spring
Summer
2018



www.vaude.com

**Sustainable Outdoor
Clothing & Gear**



TRANSPORTATION TO THE FINISH POINT

Shuttle Bus



Yuen Long MTR Station <-> Po Leung Kuk Tai Tong Holiday Camp

From 07:00 on Saturday, 17 November, to 14:30 on Sunday, 18 November, the Organiser will provide a free shuttle service that will run between the Finish Point and the Yuen Long MTR Station. The bus schedule will be displayed at the Finish Point.

By Public Transport

(For details, please refer to schedules operated by various transportation companies)

Bus > MTR Feeder Bus

From HK Island to Yuen Long: 968, N368
From Kowloon to Yuen Long: 68X, 268B, 268C, 268X, N269
From NT / Lantau to Yuen Long: 53, 54, 64K, 68M, 76K, 77K, 269D, 276, 276P, B1, E34B, N30
K66: Long Ping Station <-> Tai Tong
(alight at Tai Tong Shan Road, and then walk 20 minutes to the camp)

Mini Bus (Red)

Yuen Long Hung Min Court (opposite CitiMall) <-> Tai Tong Road
(alight at Tai Tong Shan Road, and then walk 20 minutes to the camp)

Taxi (Green)

Yuen Long <-> Tai Tong Holiday Camp (fee: around \$40)

By Car

(Please refer to the road map on P.37)

Route 3 > Yuen Long Highway

Drive towards the Yuen Long / Tin Shui Wai direction. After passing the Tai Lam Tunnel toll booth, go straight over the flyover towards Tuen Mun. Then take the lane furthest to the left and drive towards the Yuen Long Highway.

Yuen Long > Tai Tong Highway Shan Road

When you arrive at the Shap Pat Heung Interchange, turn left onto Tai Kei Leng Road (Yuen Long South) and then turn left again onto Tai Tong Road. You will see another roundabout. Go down Kiu Hing Road, then turn left onto Tai Tong Shan Road.

Tai Tong > Tai Tong Shan Road Holiday Camp

Drive to the Finish Point (about a three-minute drive). You will see the entrance to the Tai Tong Holiday Camp on the left.

Please note:

- Support team vehicles are allowed to enter the camp site. Please park within the designated area. Each team is entitled to one parking permit, which will be posted to team leaders in early November. Only private cars with Finish Point parking permits are allowed to enter the car park (and once only).
- On Saturday, 17 November, parking spaces will be in heavy demand as it will be very busy around the Finish Point. Please only park as directed and be patient with other users of the parking area.



Cheers for
Hong Kong
by Watsons Water
and BEACON

Download
"Drops of Fun"
Mobile App



Scan bottle cap QR code to redeem
Limited Edition gifts

📖 IELTS Mock Exam Paper Sets

🎁 Limited Edition Gift Sets



GROUP
BEACON
遵理

Cheers up ambassadors by Mr. Issin Nomura



PO LEUNG KUK JOCKEY CLUB TAI TONG HOLIDAY CAMP TRAFFIC ROUTE

